

# CDS-9090



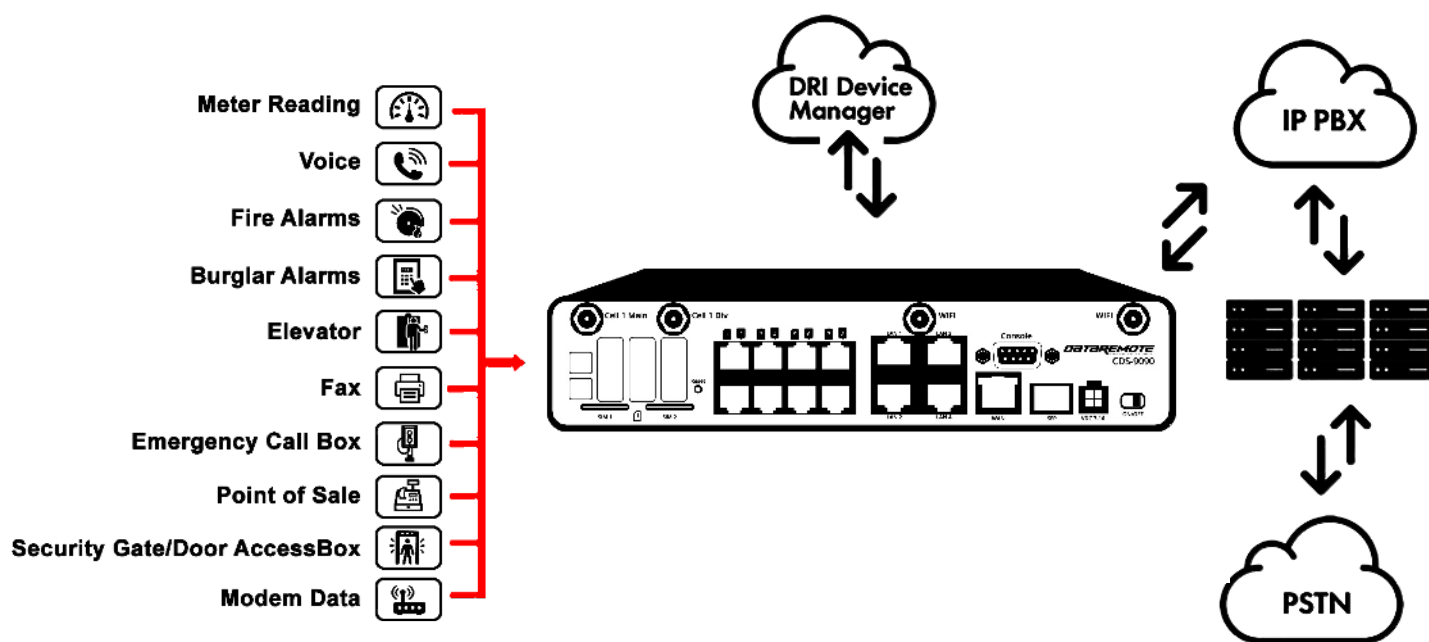
***POTS IN A BOX®*** Cellular appliance directly replaces  
wireline analog Plain Old Telephone Service (POTS) Lines.

## POTS IN A BOX® Solution

The DataRemote CDS-9090 *POTS IN A BOX* solution enables legacy analog wireline in-band Voice, currently connected to the Public Switched Telephone Network (PSTN), to be carried over Verizon's LTE Cellular Data Network. The CDS-9090 is a cellular appliance that directly replaces wireline Plain Old Telephone Service (POTS) lines including those used for voice calls, FAX, alarm, analog data, ring-down, contact ID for fire alarms, emergency lines and E-911.

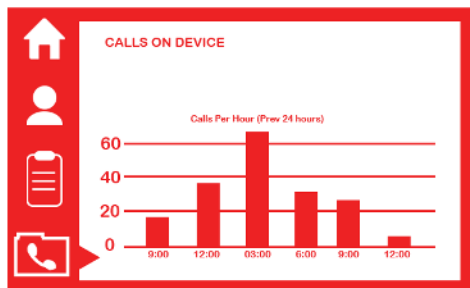
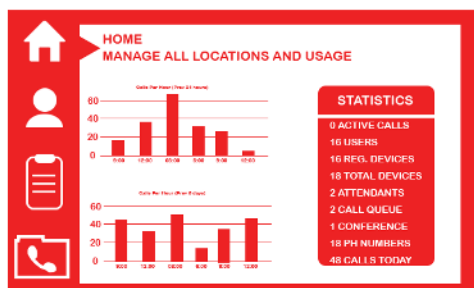
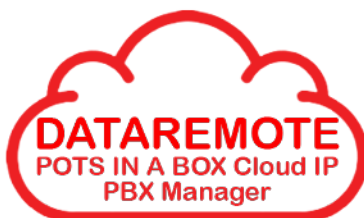
This solution uses Verizon's Cellular Network to provide high levels of security and reliable cellular connectivity. A firewalled Network Operating Center (NOC) routes Cellular data received via Verizon's LTE Network to or from the PSTN to enable call origination or call completion to occur using various methods.

The CDS-9090 replaces existing wireline analog lines and permits uninterrupted, fast and reliable bi-directional Voice over Internet Protocol (VoIP) call completion. Any application functionality that requires a traditional wireline dial tone based circuit may utilize The CDS-9090 for connectivity. Transmission options include ability for both Cellular Data channel and other alternative Internet access pathways providing true fail-over, diverse, and other alternate routing for calls.



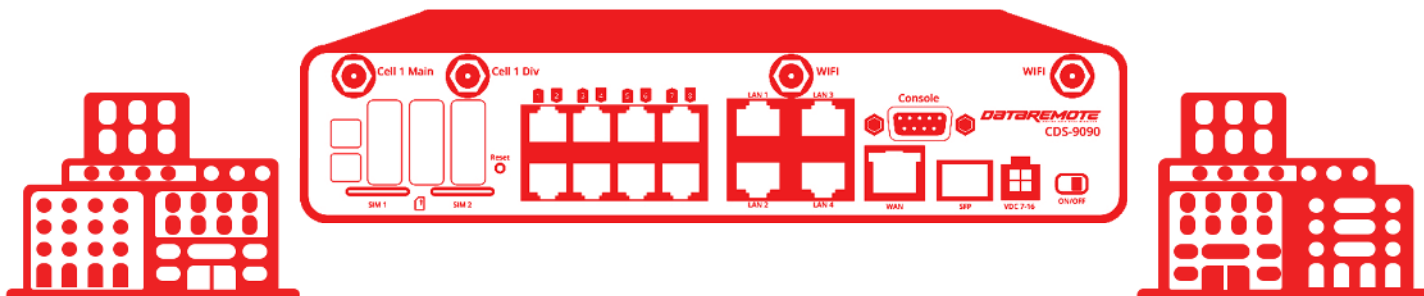
## Cloud PBX Manager

DataRemote offers a comprehensive suite of flexible Cloud-based features that can increase productivity at every business level for Enterprise. Manage all services and Group/User features from our customer facing, web-based user portals. We deliver outstanding voice quality and reliability through our network by housing our server stacks in diverse, geo-redundant data centers Across the United States. Our data centers provide the optimal level of security and high availability IP connectivity through multiple carrier backbones and multitiered power backups. Investing in this solid architecture and managing all network components with our advanced monitoring tools and highly skilled engineering and support staff means that we deliver the highest level of service.



**INVENTORY**  
MANAGE BY LOCATION

Phone Numbers		Phone Hardware	
NUMBER	TREATMENT	DESTINATION	NOTES
888-555-1212	User	300	DID
877-555-1212	Queue	115	Routed
800-555-1212	Queue	115	Routed
887-555-1212	Available	Domain	Routed



## Applications

Any Application Functionality that Requires Traditional Analog Wireline with CLID, E-911 Support, Such as:

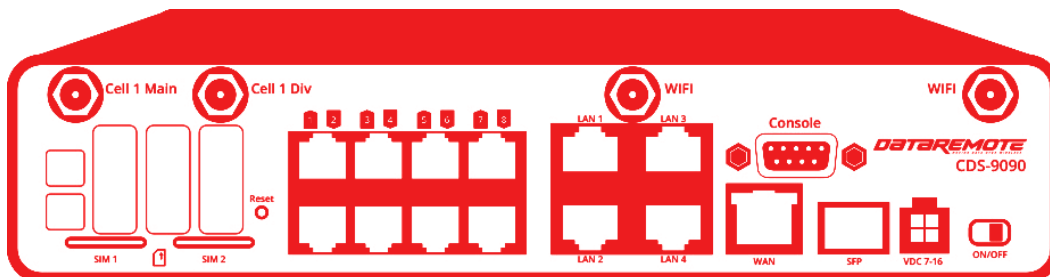
- Fax Transmission
- Burglar and Fire Alarms
- Ring-Down Line Circuit (Autodial)
- One Number Dialer Line
- Elevator, Paging, Taxi Phone Line
- Apartment Call Box
- Gate Access
- Analog M2M
- Legacy Analog Modem Support
- Utility Automatic Meter Reading
- Point of Sale Terminal Line
- Vending Machine Communication
- ATM machine Data Line
- Telemetry Command & Control (SCADA)
- SMB Router/Gateway
- High speed 4G/LTE Internet access
- Wireless access Via Wi-Fi

## Supported Services

- Voice Over IP via LTE
- Failover GSM voice
- Auto Dial call boxes (Ring Down)
- DRI FAX
- Contact ID for Fire and Security Alarms
- FSK Analog Modem Support
- Legacy In-band (M2M, SCADA)
- Hi-speed LTE Internet
- Wi-Fi + LTE

## DELIVERING NEXT-GENERATION HOSTED COMMUNICATIONS SERVICES

- VoIP Solutions
- Cloud based Hosted IP PBX
- Rich Suite of Communications Services
- DID/Toll Free Origination & Management
- High Quality PSTN Termination



If there is a power outage and the battery backup in your device is not installed or is exhausted after several hours, you may not be able to call 911. Battery backup hours vary based upon usage and type of features enabled