

## **LEADERS IN WIRELESS SOLUTIONS** for POTS Line Replacement.

DataRemote specializes in IoT wireless solutions enabling clients across various verticals to reduce cost and gain better visibility and reporting of legacy equipment. DataRemote's POTS IN A BOX® solution is an enterprise-grade LTE router and IP appliance that directly replaces wireline Plain Old Telephone Service (POTS) lines including the capability for transmission of FAX, fire panel, burglar alarm, analog modem data, ring-down, voice & emergency lines, with full access to E-911. DataRemote, Inc. has consistently been at the forefront of the IoT marketplace since 1991.

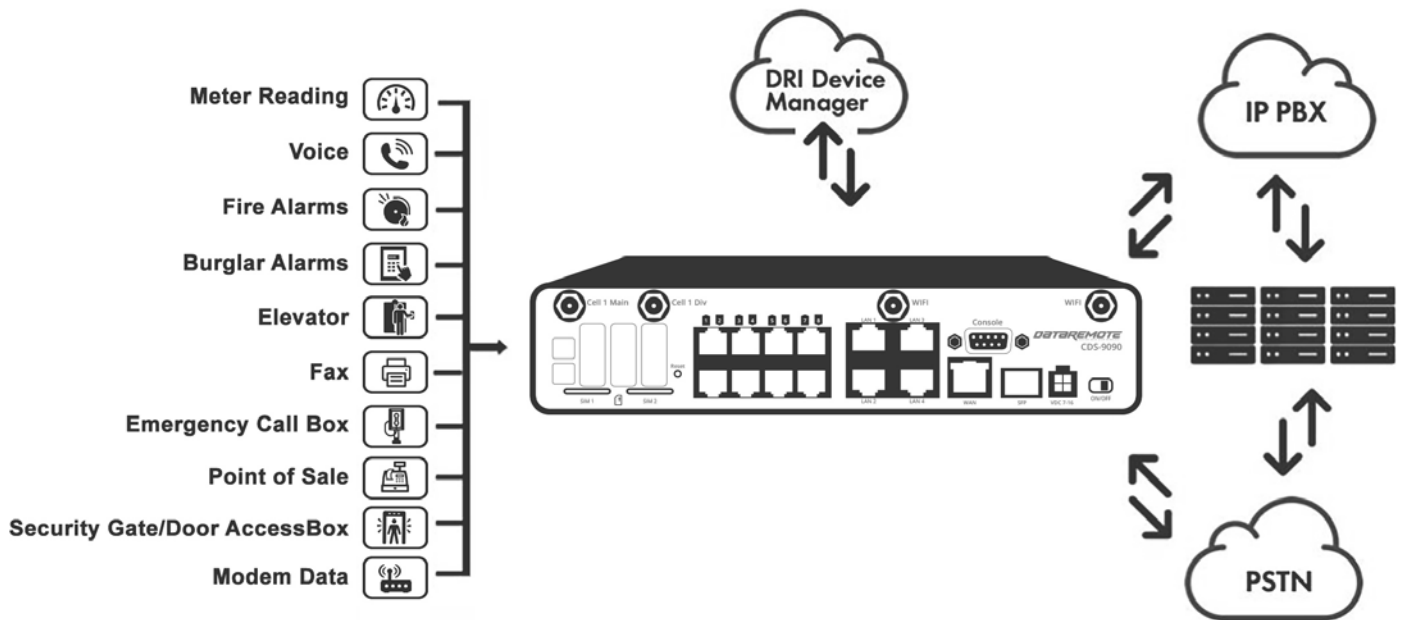
We deliver comprehensive engineering and sales support, cutting-edge hardware, and top-tier service that translate into rapid-time-to-market and cost-effective enterprise solutions.

The evolution of data-over-wireless gives you no other option, but to find the right solution to keep your business running.

DataRemote is a next-generation supplier and integrator of future-proofed wireless solutions that convert your legacy landlines into next generation wireless technology at a fraction of the cost.

## ONE DEVICE TO REPLACE ALL YOUR LANDLINES

DataRemote offers enterprise-grade solutions for traditional landline replacement. Our suite of products converts all your existing legacy landlines to next generation service via VoIP and the LTE cellular network whether it be voice, fax lines, burglar, fire alarms, elevators, ATM's, emergency call boxes, point of sale systems and more.



**Virtually every application that requires a copper hardline can now be replaced with one device!**

## OUR COMPETITIVE ADVANTAGE

- Fixed monthly cost with savings of up to 50%
- Protect your infrastructure
- Streamline and integrate business communications
- Future-proofed technology
- 24 hour Integrated battery backup
- Plug & Play Implementation
- Fully programmable for custom use cases
- Supports "specialty lines"
- 4G LTE failover and 5G ready
- High Speed Internet Access
- Wi-Fi
- Device Mass Management

## **DATAREMOTE ENTERPRISE-GRADE SOLUTIONS**

### **CDS-9010**

The NEW Advanced POTS IN A BOX® CDS-9010 Cellular/Wi-Fi/PSTN/-Multi Carrier solution is an enterprise grade LTE Router that provides a secure, reliable Connectivity and back-up. The POTS IN A BOX® Technology enables multiple combinations of legacy analog wire-line in-band Voice, FAX, DTMF signaling tones, analog data modem tones, and Alarm system signals (all previously connected to the Public Switched Telephone Network (PSTN)), to be carried over flexible combinations of WAN/LAN/LTE Cellular Data Network. Additionally it comes with a 12 or 24 hour backup battery options.



### **CDS-9070**

The CDS-9070 wireless VoIP LTE Dual Band Router is one of the most advanced, versatile and scalable routers on the market. It enables all traditional functions of a 4G fail-over router with the added convenience of 2-way voice capabilities for POTS line replacement with internal battery back-up. The CDS-9070 provides a continuous gateway to all your data and voice needs.



### **DRI-9080**

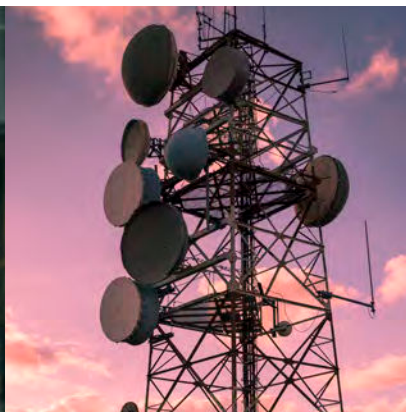
DRI-9080 replaces existing wireline analog lines and permits uninterrupted, fast and reliable bi-directional Voice over Internet Protocol (VoIP) call completion without the need for wireline "dial tone" to transport the call including traditional analog voice telephone service, E-911 traffic, FAX, and Burglar & Fire Alarm traffic. Any application functionality that requires a traditional wireline dial tone-based circuit may utilize POTS in a BOX® for connectivity.



### **CDS-9090**

The NEW Advanced POTS in a BOX® CDS-9090 Cellular/Wi-Fi/PSTN/FirstNet capable Multi Carrier Router is one of the most advanced, versatile and scalable routers on the market. POTS IN THE BOX® technology enables the CDS-9090 to communicate with multiple combinations of legacy analog wireline in-band Voice, Machine to Machine (M2M) Data, DTMF signaling tones, analog data modem tones, FAX and Alarm system signals (all previously connected to the Public Switched Telephone Network [PSTN] to be carried over IP. The CDS-9090 offers a backup battery, self-reporting, and monitoring





## DATAREMOTE ATA PRODUCT COMPARISON

	CDS 9090	CDS 9010	CDS 9070	CDS 9080
	10/100/1000	10/100/1000	10/100	10/100
	8	2	2	8
	5 +SFP Port	3	5	2
	Up to 24 hours	Up to 24 hours	Up to 24 hours	NA
	Alarm Analog Data Fax	Alarm Analog Data Fax	Alarm Analog Data Fax	Alarm Analog Data Fax
	Ethernet LTE Wi-Fi	Ethernet LTE Wi-Fi	Ethernet LTE Wi-Fi	Ethernet LTE
	2.4GHz 5GHz	2.4GHz 5GHz	2.4GHz 5GHz	NA
	ACS Portal GUI API	ACS Portal GUI API	ACS Portal GUI API	ACS Portal GUI API
	2 (Multi - Carrier)	2 (Multi - Carrier)	2 (Dual Carrier)	N/A
	2,4,5,12,13,14,66,71	2,4,5,12,13,14,66,71	2,4,5,17	N/A
	AT&T / TMO VZW	AT&T / TMO VZW	AT&T T-Mobile	N/A

If there is a power outage and the battery backup in your device is not installed or is exhausted after several hours, you may not be able to call 911. Battery backup hours vary based upon usage and type of features enabled.